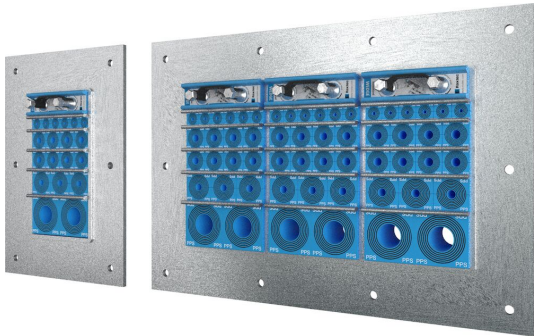




# Roxtec GH transit for plastic conduits

Fire rated transit for plastic conduits.

The Roxtec GH for plastic conduits is a transit for bolting onto even structures like steel or sandwich walls/floors where there is a need for a fire rating. The rectangular steel frame allows for routing of conduits with high cable density. The Roxtec RM PPS sealing modules for plastic conduits are marked with corresponding NW size number to simplify installation. RM PPS modules can be combined with regular RM modules for a mix of conduits and cables in the same frame.



- Easy to maintain and inspect
- Provides built-in spare capacity

### Product characteristics



Fire rated



IP/UL NEMA

### Structure of installation



Sandwich panel



Metal

### Mounting type



Bolting

## Ratings & certificates

### Fire

- E/EI rating according to EN 45545 E60

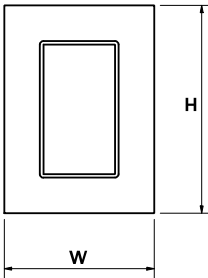
### Tightness

- IP 66/67

## Frame dimensions

in/lbs

The frame variants below are a limited selection. For the full range of frames and configurations, please visit [roxtec.com](https://www.roxtec.com).

	Product	Frame openings	Packing space	External dimensions WxHxD	Aperture dimensions w x h	Weight	Art. no
	GH 6x1 GALV	1	4.724 x 7.087	9.941 x 13.78 x 2.362	5.827(+0.197/-0.197) x 9.646(+0.197/-0.197)	9.7	5GH0000007882
	GH 6x2 GALV	2	4.724 x 7.087	15.079 x 13.78 x 2.362	10.945(+0.197/-0.197) x 9.646(+0.197/-0.197)	16.5	5GH0000007828
	GH 6x3 GALV	3	4.724 x 7.087	20.217 x 13.78 x 2.362	16.102(+0.197/-0.197) x 9.646(+0.197/-0.197)	22.9	5GH0000008108
	GH 6x1 AISI316	1	4.724 x 7.087	9.941 x 13.78 x 2.362	5.827(+0.197/-0.197) x 9.646(+0.197/-0.197)	10.8	5GH0000008261
	GH 6x2 AISI316	2	4.724 x 7.087	15.079 x 13.78 x 2.362	10.945(+0.197/-0.197) x 9.646(+0.197/-0.197)	16.1	5GH0000008179
	GH 6x3 AISI316	3	4.724 x 7.087	20.217 x 13.78 x 2.362	16.102(+0.197/-0.197) x 9.646(+0.197/-0.197)	22.4	5GH0000009292

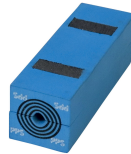


# Sealing components

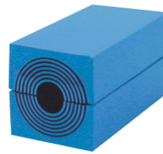
## Sealing components



Lubricant



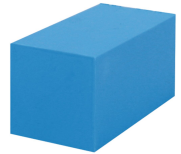
RM PPS module with Multidiameter™



RM module with Multidiameter™



Wedge & Wedgekit



RM solid compensation module



Stayplate

For detailed information, please visit [roxtec.com](https://www.roxtec.com).

The product information provided by Roxtec does not release the purchaser of the Roxtec system, or part thereof, from the obligation to independently determine the suitability of the products for the intended process, installation and/or use.

Roxtec gives no guarantee for the Roxtec system or any part thereof and assumes no liability for any loss or damage whatsoever, whether direct, indirect, consequential, loss of profit or otherwise, occurred or caused by the Roxtec systems or installations containing components not manufactured by an authorized manufacturer and/or occurred or caused by the use of the Roxtec system in a manner or for an application other than for which the Roxtec system was designed or intended.

Roxtec expressly excludes any implied warranties of merchantability and fitness for a particular purpose and all other express or implied representations and warranties provided by statute or common law. User determines suitability of the Roxtec system for intended use and assumes all risk and liability in connection therewith. In no event shall Roxtec be liable for indirect, consequential, punitive, special, exemplary or incidental damages or losses.

The Roxtec products are offered and sold in accordance with the conditions of the Roxtec General Terms of Sales. The latest version of the Roxtec General Terms of Sales can be downloaded from <https://www.roxtec.com/en/about-us/about-roxtec/general-terms-of-sales/>

We reserve the right to make changes to the product and technical information without further notice. Any errors in print or entry are no claims for indemnity. The content of this publication is the property of Roxtec International AB and is protected by copyright.

This document was generated on: 2024-04-27